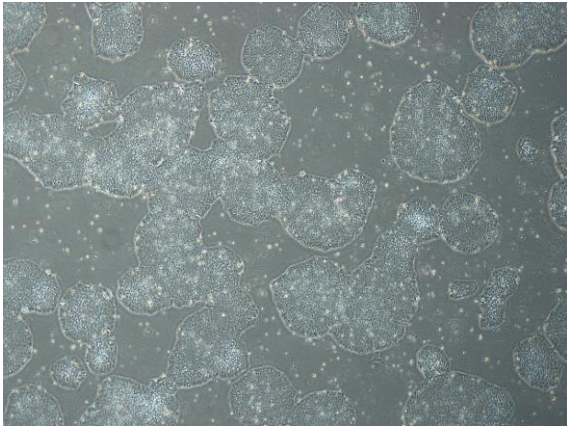
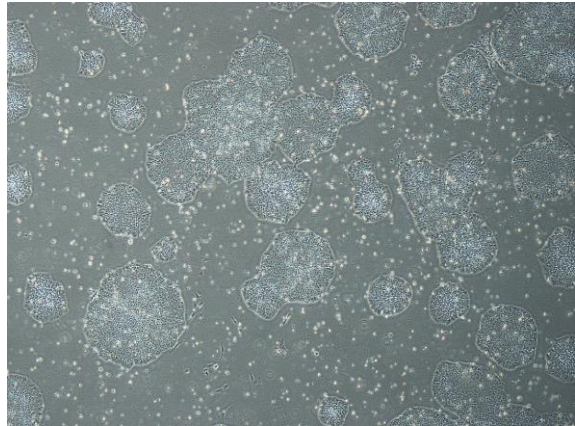


【 CiRA-j-1212 】 Morphology of iPSC colonies

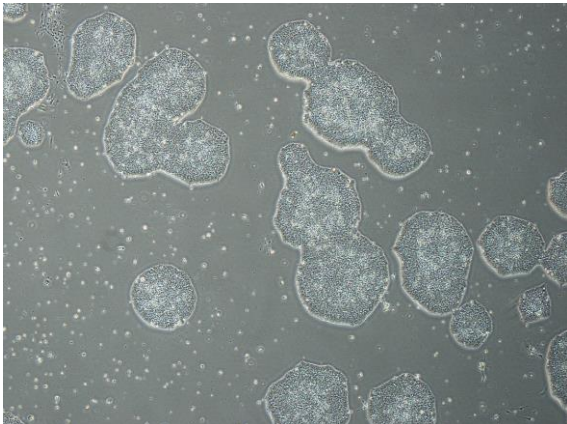
CiRA-j-1212-A: passage-3



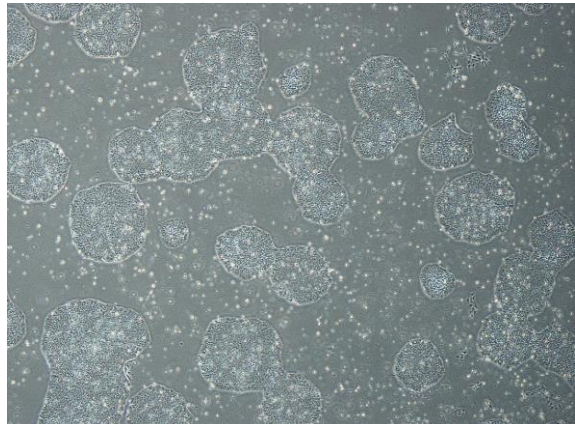
CiRA-j-1212-B: passage-3



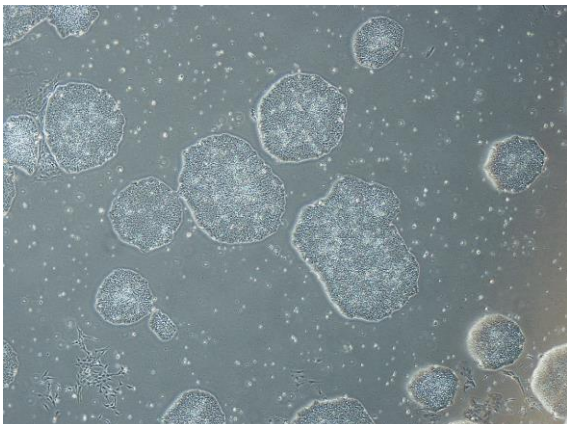
CiRA-j-1212-C: passage-3



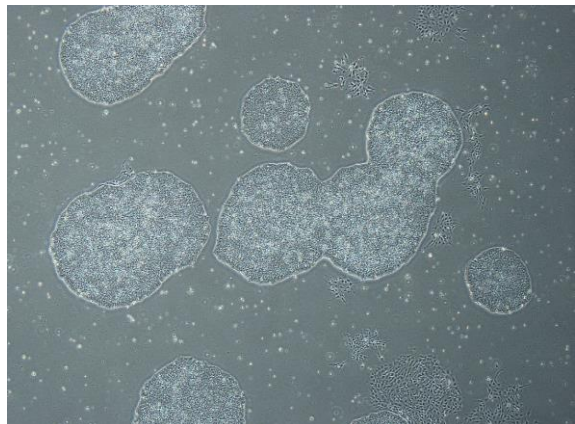
CiRA-j-1212-D: passage-3



CiRA-j-1212-E: passage-3



CiRA-j-1212-F: passage-3



(All images were captured at 4x magnification)